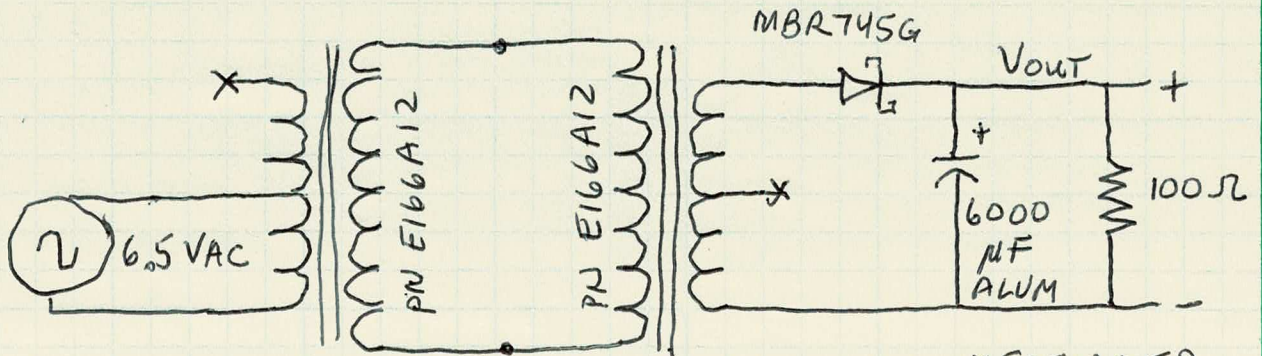


20201217 / mda

MEASUREMENTS, BENCH TEST OF BACK-TO-BACK TRANSFORMER-RECTIFIER

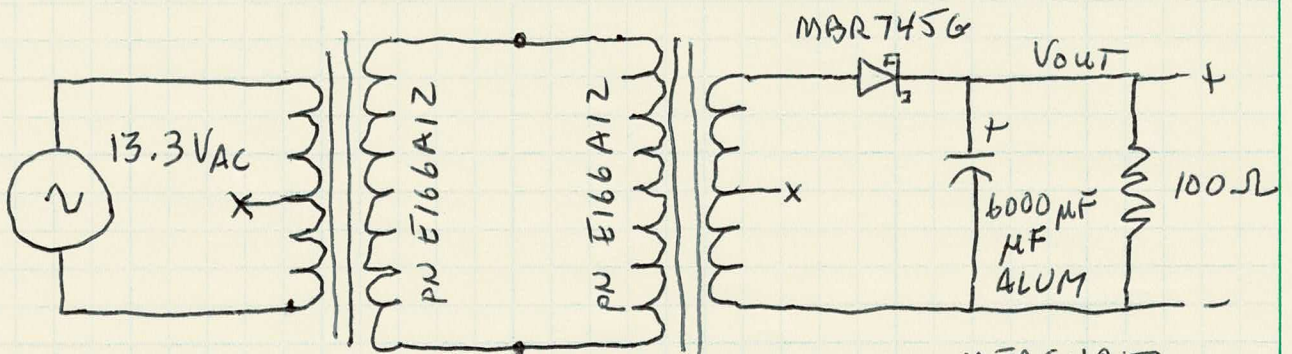
OPTION 6.3VAC INPUT:



NORMALIZED TO 6.3VAC
PROJECTED:
LOW VOLT = 6.78 VAC
HIGH VOLT = 8.32 VDC

MEASURED
Vout:
7.60 VDC
RIPPLE
63 mV-AVG
(~0.8%)

OPTION 12.6VAC INPUT:



NORMALIZED TO 12.6VAC
PROJECTED:
LOW VOLT = 7.50 VDC
HIGH VOLT = 9.22 VDC

MEASURED
Vout:
8.61 VDC
RIPPLE:
72 mV-AVG
(~0.8%)